

APPENDIX 1

"THE NORTH FORTY -- The Heart of a Neighborhood"

**Presented to the North 40 Steering Committee
August 5th, 2014**

PREPARED AS SUPPLEMENT TO THE PREVIOUS REPORT

***"NRC Justification for Town Acquisition and Use of the
North 40 Property"***

**Presented to the North 40 Steering Committee
July 22nd, 2014**

THE NORTH FORTY -- *The Heart of a Neighborhood*
Together with Fuller Brook Park and the Centennial Reservation, the North Forty is the third Jewel and the one we should not lose.

The numbers speak for themselves:

Only 40% of Wellesley's open spaces are protected.

In order to discover the real benefits these 46 acres provide to the Town of Wellesley, and what they mean to the abutting neighborhood, we need to take a closer look:

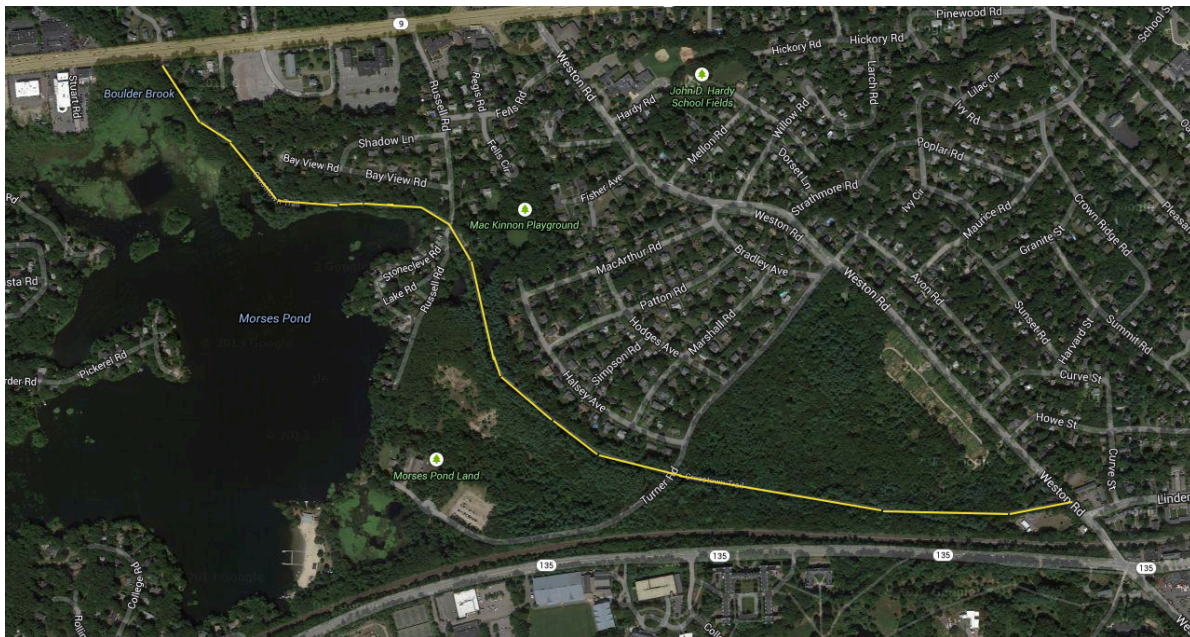
For many decades, Wellesley College has allowed our community the use of the North 40 for passive recreation of all kinds, which are particularly important to the residents of this densely populated part of town surrounding it. Combined with adjacent Moses Pond, this open space -- just steps from busy downtown -- gives the Town's residents the opportunity to be immersed in virgin nature, passive and active recreation.

Dotted throughout Wellesley, our open spaces offer respite from our busy lives and provide nourishment for our spirits. These areas are the touchstones of our Town, the hearts of our neighborhoods. Residents love and use their abutting open spaces, like Fuller Brook Park, Boulder Brook, Carisbrook and Centennial Reservations, Town Forest and Longfellow Pond, every day.

Similarly, the North 40's 46 acres are used and beloved by residents at this western end of town. Losing the North 40 would be like removing the heart from this neighborhood, and a great loss for the Town's inventory of parkland and open spaces, protected or unprotected.

While it can be hard to convey the emotional reasons open spaces are so valued in our Town, we are offering the following 10 realistic reasons to purchase the N40 outright

TEN REASONS TO PRESERVE THE NORTH 40



1. THE CROSSTOWN TRAIL

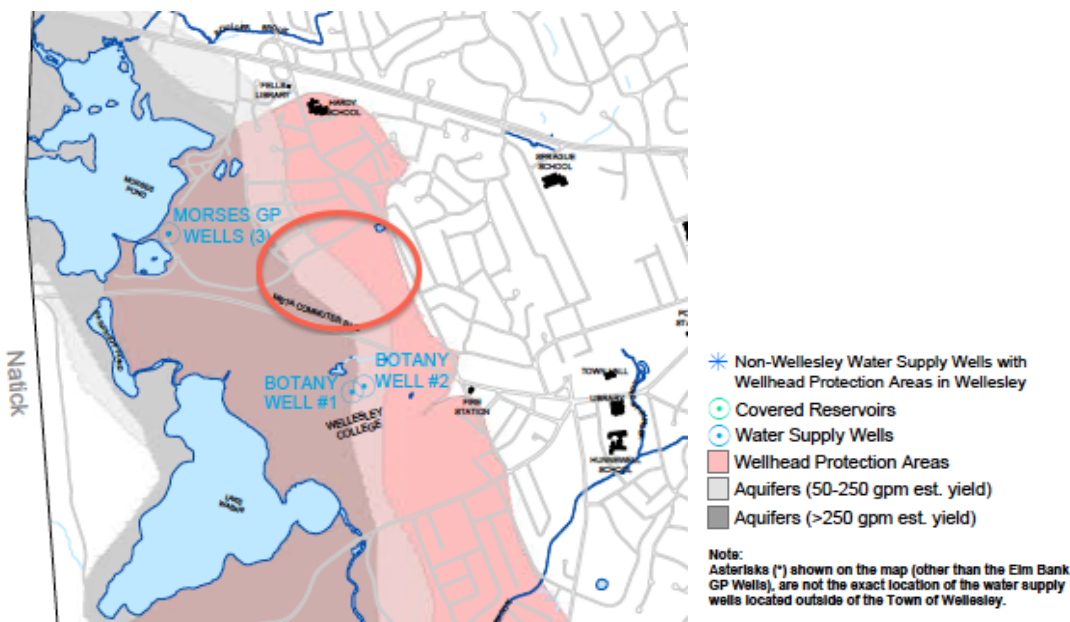
...is the pride of the NRC's all-volunteer Trails Committee, and heavily used by all Town residents; this part of the Crosstown Trail is perhaps the most scenic. It has views of Moses Pond, tall stands of pine trees, and a variety of dense wooded terrain, much of it unique to our geographic area. To walk it means one never sees a structure or car. It runs from Route 9, right through the North 40, and into Town.



2. EXERCISE FOR ALL

Walking, hiking, biking, running, cross-country - there's nothing better than a workout in nature.

Children play on the land, climb on boulders, and experience nature as they used to, before plastic swing sets and scripted activities became the norm.



3. CLEAN WATER & LAND

The orange oval on the above Wellesley Groundwater Resources Map* approximately shows the location of the North 40. The pink area indicates the Wellhead Protection Area. The light and dark grey areas indicate the location of underground aquifers. The area is a MassDEP Zone 2 Water Supply Protection Area. Simply stated, this land allows the rain and snow to return to ground water wells and be reused. The area provides natural flood protection to nearby properties and streets; vegetation, soils and roots naturally filter and clean the water. While the North 40 is very beautiful, it's much more than just a pretty face.



4. WILDLIFE

The North 40, along with next-door Morses Pond, provides important wildlife habitat. Snakes, bats, hawks and foxes keep our rodent and mosquito populations in check. Allowing our wildlife their own space helps keep them out of ours. A sensitive vernal pool occupies the site; the vernal pool is protected under state and local bylaws.



5. VEGETATION

Home to diverse and abundant moss, lichen, fungi, flora, and fauna, foliage and berries provide food for birds and animals. Roots protect against erosion, and help maintain our valuable topsoil.



6. THE GARDENS

They are the spirit of the North 40. Residents from all walks of life meet, greet and bond over the vegetables. The Community Gardens exemplify the true meaning of community.



7. COMMUNITY SERVICE

Many community gardeners generously donate produce weekly to the Wellesley Food Pantry. Students and Scouts volunteer and learn how good it feels to give back.



8. NO NEW TRAFFIC

We're all frustratingly familiar with the current traffic situation on Weston Road and surrounding streets. Why add more cars? Walking paths and bike trails alleviate traffic by providing alternate and safe transportation. These paths could be expanded to further mitigate traffic.



9. PEACE and BEAUTY

Both have value and add meaning to our lives. The North 40 provides 46 acres of serenity for reflection, bird watching, star-gazing -- the chance to commune with nature. That's priceless!



10. AND -- IT'S FREE!

Once purchased, keeping the North 40 as open space costs ZERO - nothing. The DPW estimates that a residential development of 80-100 homes would cost the Town approximately \$200K annually in upkeep of new roads alone. More homes mean more families and additional students for our schools. Leaving the land undisturbed is the most cost-effective to preserve this jewel.

Our open spaces provide all these things and more. They are a gift we give to ourselves and to future generations.

* Wellesley Groundwater Resources map:

http://www.wellesleyma.gov/Pages/WellesleyMA_Planning/7.3.pdf

Thanks to Jean Wiecha, Jack Davis, the Wellesley Trails Committee, and Save the North 40 for their use of photography. Thanks also to Drs. Judith and Giles Boland for their comments and support.